



CB GEOPHYSICAL SOLUTIONS

... state-of-the-art technology, precis data, strong partnership



info@cbgeophysical.com | www.cbgeophysical.com

LONDON | HOUSTON | KENYA | NIGERIA

Who we are

CB Geophysical is a 100% Nigerian owned company with top class professionals engaged in Seismic Acquisition, Processing, Interpretation, Integrated Reservoir Studies, Geophysical/Geotechnical surveys and Asset Management Services.

Our mission:

Assisting our clients to find and produce hydrocarbon in a cost effective manner.

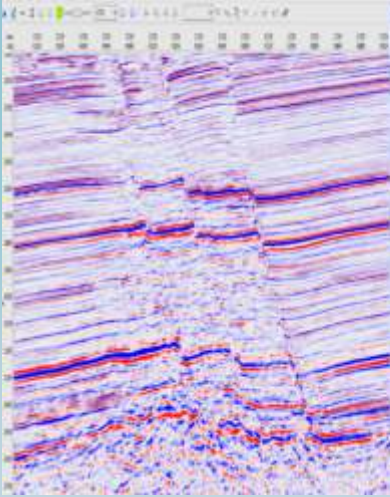
Our vision:

To be the choice partner in the provision of Seismic Data Acquisition, Processing, Interpretation and Integrated Reservoir Studies

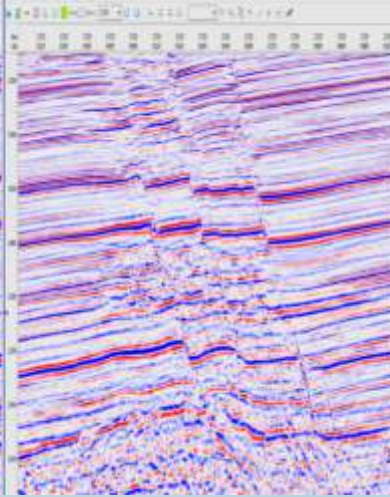
Our business is built on people, technology, processes and strong partnerships.



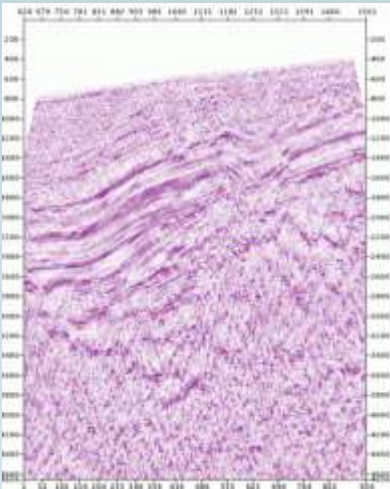
NCI PSDM



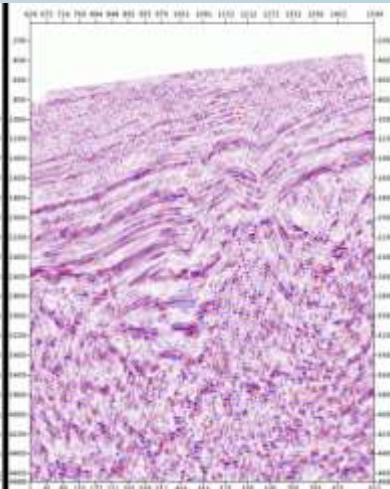
TTI-RTM Application



Conventional PSTM



Anisotropic PSTM

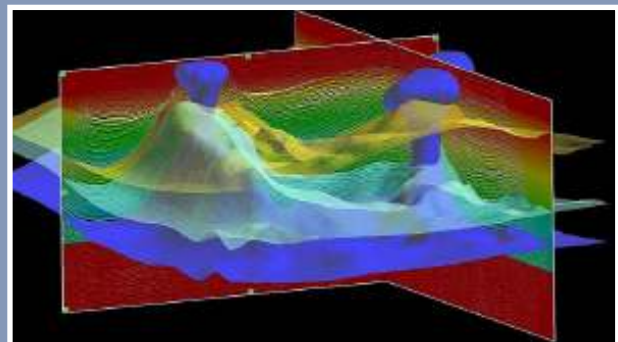
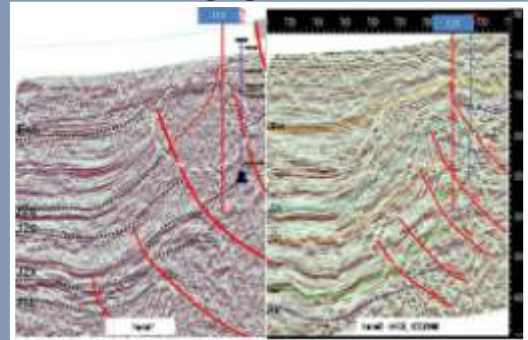


Our Services

- **Seismic Data Acquisition -**
(Land, Shallow Water/Transition, Deep Offshore) - (OBN/OBC, 3D/4D Streamer, 2D Streamer, MC)
- **Seismic Data Processing -**
(PSTM, PSDM, RTM, OBC/OBN, CRS)
- **Seismic Interpretation**
- **Geotechnical/Geophysical Survey**
- **Integrated Reservoir Studies**
- **Seismic Data Management**
- **Reserve Evaluation**
- **Field Development Plan (FDP)**

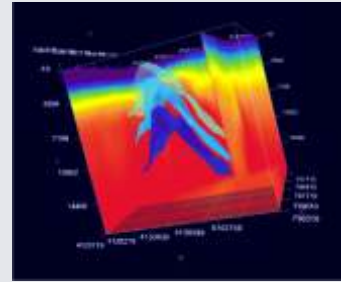
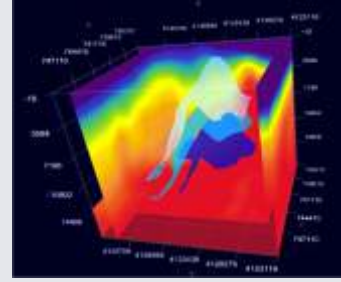
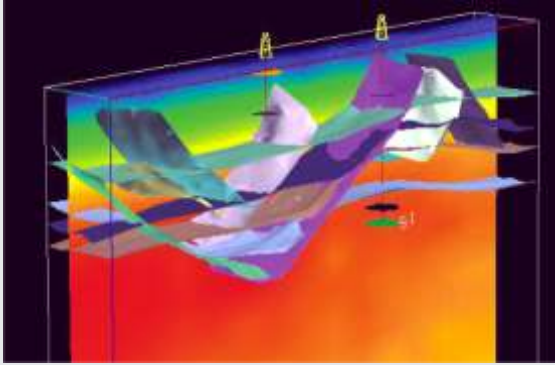


RTM Better Imaging



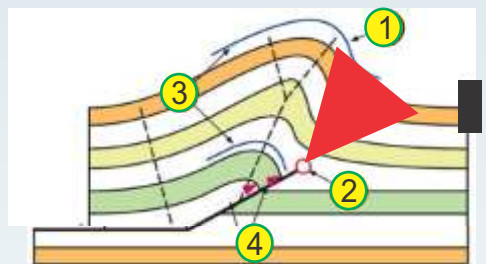
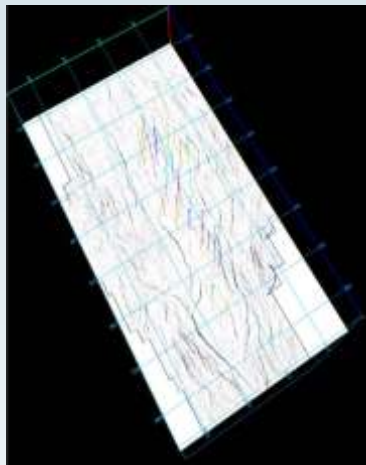
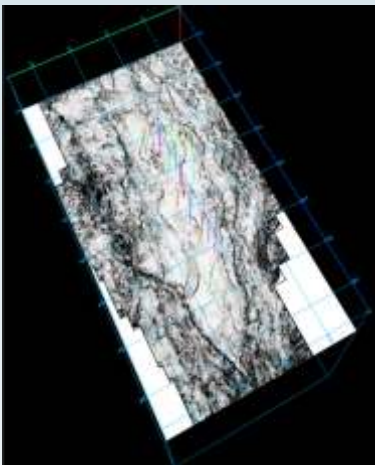
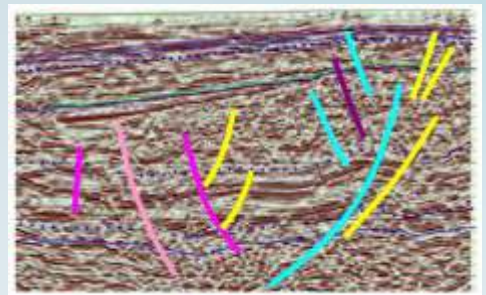
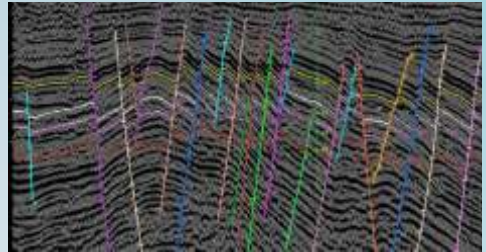
NCI Velocity Model

An accurate velocity model achieved by integration of horizon interpretation results and well calibration



Structural Interpretation

- Refined Structural Interpretation incorporating:
 - Regional structural regime
 - Theoretical model
 - Seismic attributes
 - Production and Dynamic data
 - Detailed velocity model for depth conversion



Contact:

Plot 202 Bank-Anthony Avenue, Trans-Amadi Industrial Layout,
Port-Harcourt, Rivers State, Nigeria.

Tel: +23480333913. Email: info@cbgeophysical.com

Web: www.cbgeophysical.com

LONDON | HOUSTON | KENYA | NIGERIA