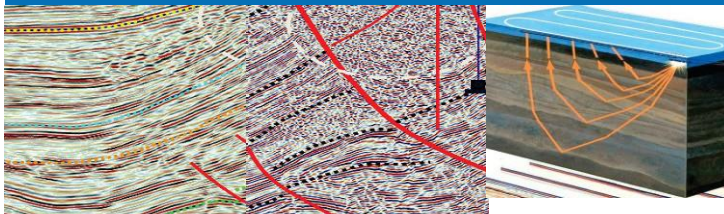




CB GEOPHYSICAL SOLUTIONS

State of the-art Technology, Precise
Data, Strong Partnership



Apt 1C, The Residence, Banana Island Road, Ikoyi, Lagos.
Plot 202 Bank-Anthony Avenue, Port Harcourt

Assisting our clients to find and produce hydrocarbon in a cost effective manner.

ABOUT CB GEOPHYSICAL SOLUTIONS

CB Geophysical is a 100% Nigerian owned company with top class professionals engaged in geological, geophysical, reservoir and asset Management services. Our prime objective is to provide enviable services of international standard. Our Vision is to be the choice partner in the provision of geological, geophysical, reservoir and asset management services. We strive to supply excellent technical solutions for our clients especially in complicated geologic and reservoir development in complex sedimentary and fractured volcanic reservoir settings.

Our Services

- Seismic Data Processing
- (PSTM, PSDM, RTM, CRS, 2D/3D/4D/OBC)
- Seismic Data Acquisition
- (OBN, OBC, 3D/4D Streamers...)
- Seismic Data Interpretation
- Subsea Studies, AVO & Inversion
- Reservoir Characterization
- Reservoir Evaluation, Basin Evaluation
- Field Development Planning
- Seismic Data Processing & Interpretation Training

Seismic Data Acquisition

Our high level compliance to international HSE practices, good teamwork, professionalism, state of the art acquisition tools and strong partnership equip us to go where ever your asset is located irrespective of how rugged and hostile the terrain may be.

Land Acquisition



Marine Acquisition



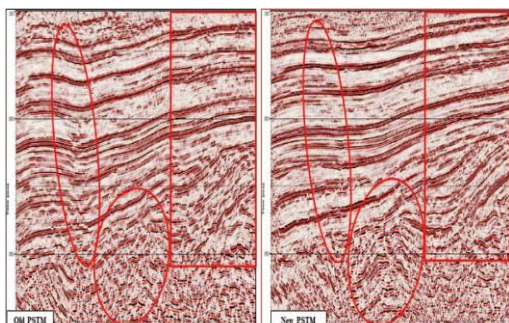
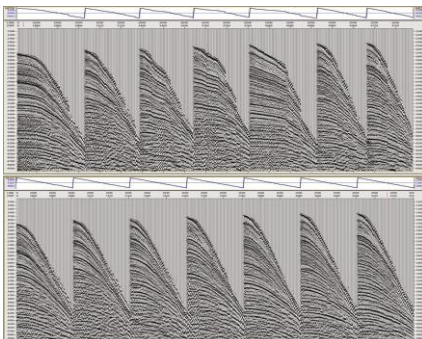
Our BG Prospector is capable of seismic data acquisition for:

- OBN
- OBC
- 3D /4D Streamers
- 2D Streamers
- G & M
- MC

Seismic Data Processing Technologies

5D Interpolation/Regularization

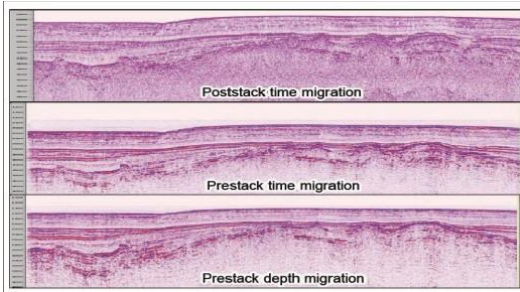
- Improves the results of Kirchhoff migration by decreasing the interval of shot and receiver line.
- Better for the results of wave-equation migration by getting the regular location of shots and receivers.
- Resizing CMP bin size is useful for merging processing or imaging of steep reflectors.
- Can get uniform coverage of offset and azimuth of each CMP bin after data regularization.



Complex Structure Imaging

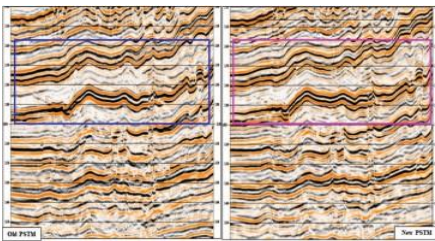
Seismic Data Processing Technologies

We provide our clients with the true subsurface image of their assets through high resolution 2D/3D/4D Seismic data processing which is borne out of; accurate Geometry updating and Statics correction, careful signal preservation and noise attenuation, proper wavelet and velocity analysis/modeling, 5D Interpolation and Regularization and Pre-stack and Post-stack Time/Depth Migration.



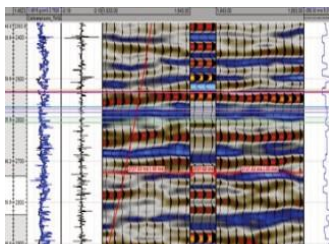
Migration

Advanced migration algorithm with well tailored parameter choices and accurate velocity model of the subsurface is key to our success in delivering high resolution seismic image.

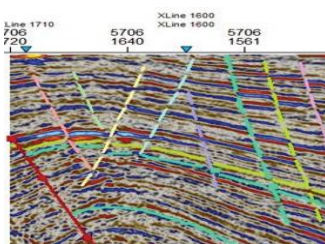


Seismic Data Interpretation

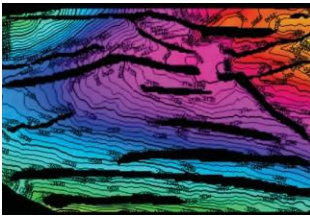
Structural interpretation and validation, Stratigraphic interpretation, Sequence stratigraphic interpretation, Depositional environment mapping, AVO studies, Hydrocarbon volume estimate and Geological riskassessment.



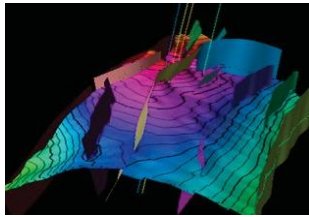
Well-to-seismic tie



Faults & Horizons interpretation



Time structure maps

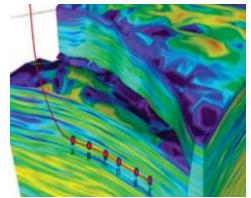
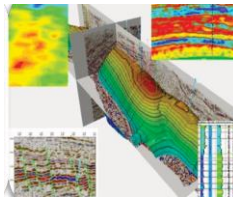
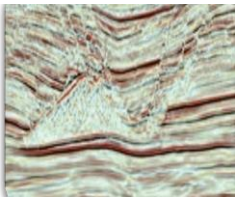


Depth structure maps

Deliverables

- Depth structure maps
- Depth fault sticks
- Seismic attributes maps
- Velocity models
- Gross rock volumes ...

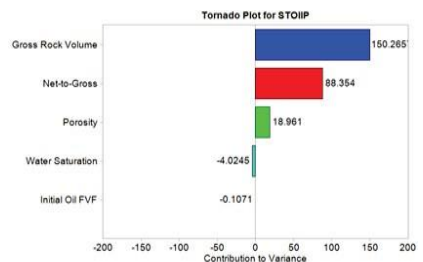
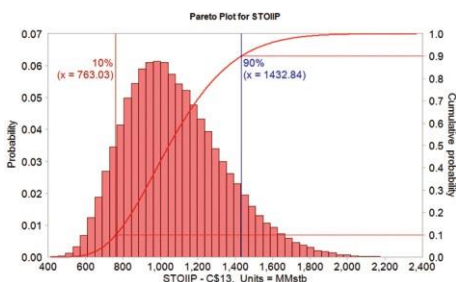
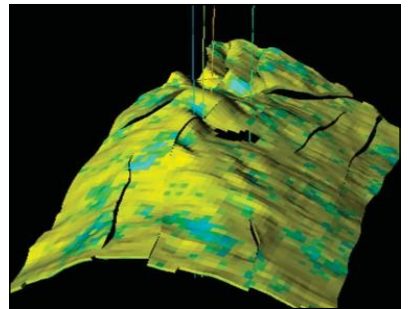
Integrated Reservoir Studies

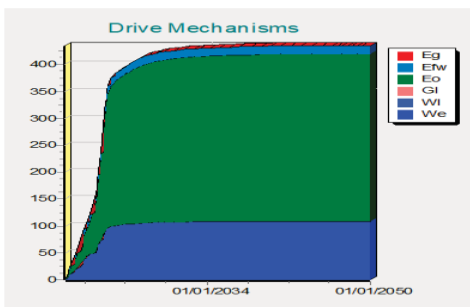
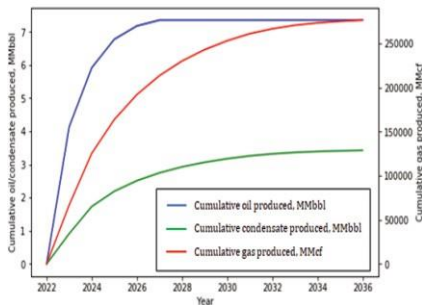


Field Development Planning Reservoir characterization

- Structural reservoir models
- Lithological/facies models
- Reservoir property models (Vsh, porosity, water saturation, permeability)
- In-place hydrocarbon volume estimates (Deterministic and probabilistic)
- Uncertainty assessment
- Well planning

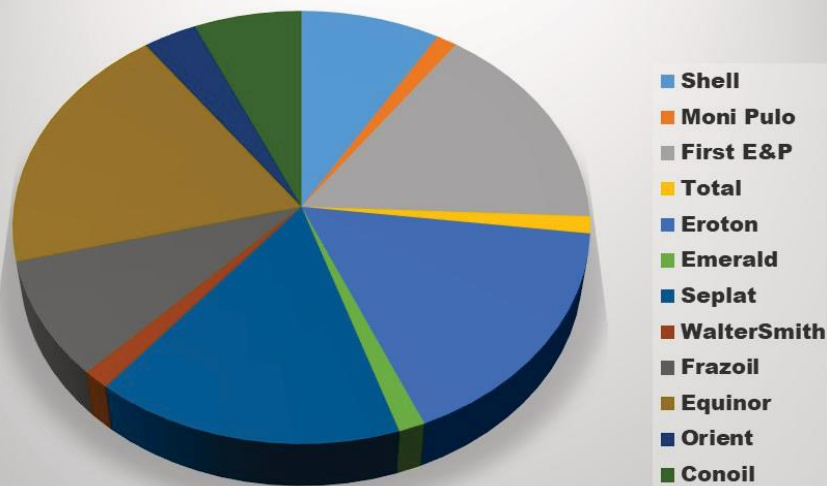
Reserve Evaluation, Static and dynamic reservoir modeling





Our Clients

3D Workload (7567 Sq Km)



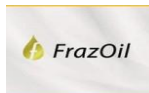
TOTAL



WALTERSMITH



EMERALD ENERGY
RESOURCES LIMITED



FIRST E&P
FIRST EXPLORATION & PETROLEUM
DEVELOPMENT COMPANY LIMITED





CB GEOPHYSICALSOLUTIONS

 info@cbgeophysical.com

 www.cbgeophysical.com